



**EAGLE
FENCE
DISTRIBUTING**

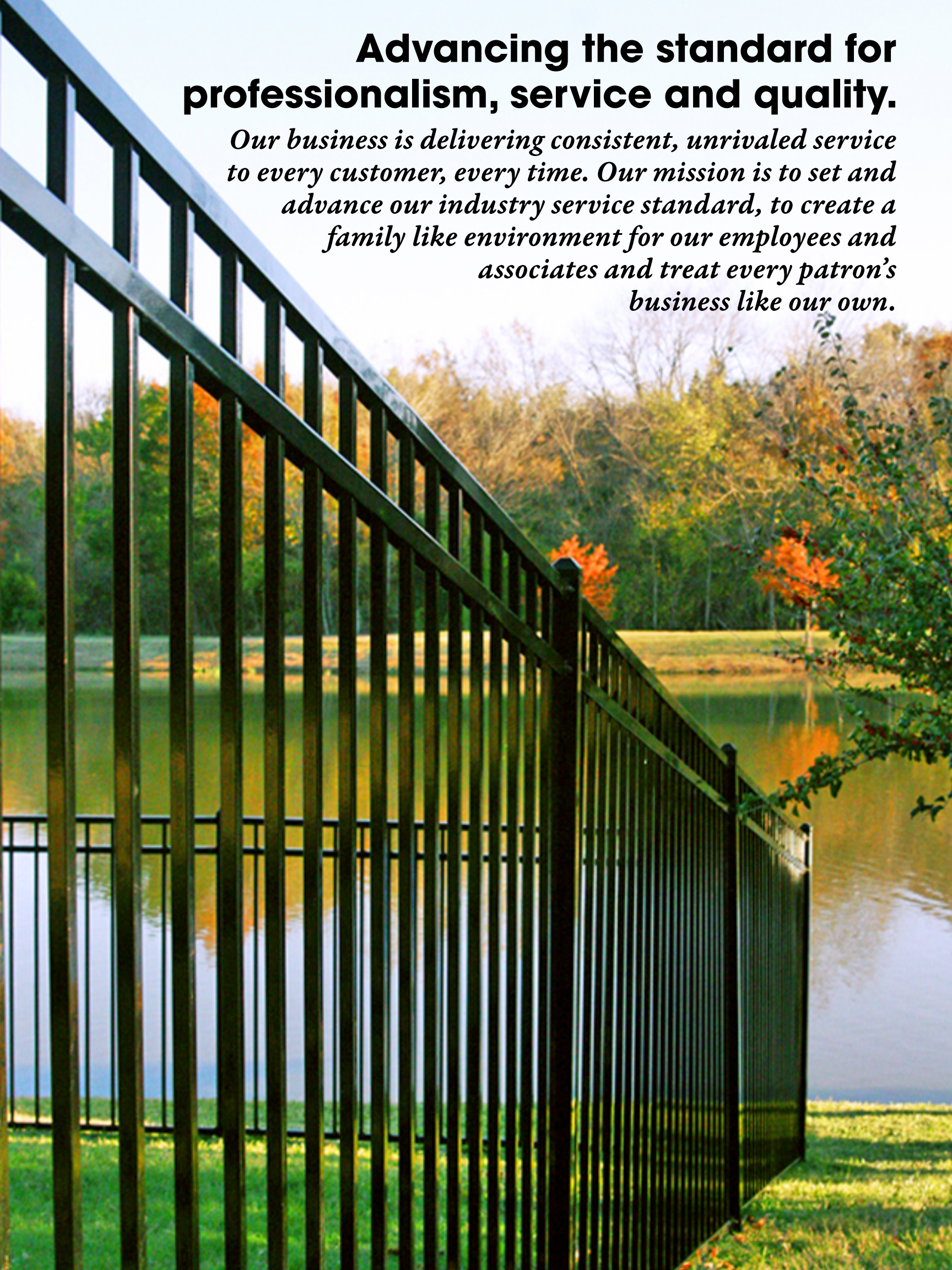




Birmingham, Alabama Chicago, Illinois Houston, Texas

**Advancing the standard for
professionalism, service and quality.**

*Our business is delivering consistent, unrivaled service
to every customer, every time. Our mission is to set and
advance our industry service standard, to create a
family like environment for our employees and
associates and treat every patron's
business like our own.*





1. Raw Scrap Steel

Mid-America Steel, a member of our family of companies, purchases scrap metals that contain properties suitable for yielding a billet that will produce a quality finished product.



2. Melting Process

Scrap steel is melted into a molten form ready for pouring into the billet forming line.



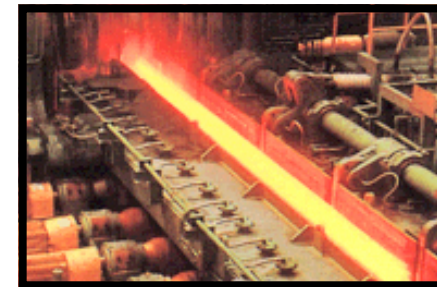
3. Molten Stage

Molten steel from the furnace is poured into the billet line where billets are formed.

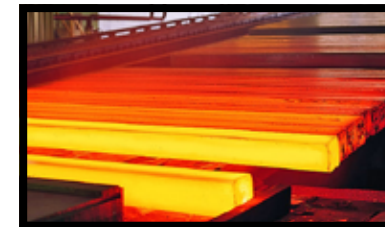


4. Billet Forming

Billets are formed from the molten steel.



Freshly produced molten billets on a cooling table.

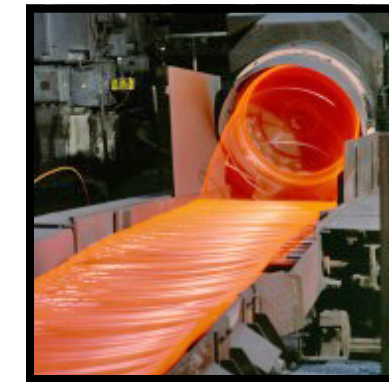


Steel billets ready for sale or the rod producing mill.



5. Rod is Produced

Billets travel through a series of forming stations that form to a specified diameter of rod to be used for various applications.



Steel rod leaving production.



6. Rod is Drawn to Strand

Rod is drawn to a specific size to be galvanized by drawing through one or more dies.



7. Strand Galvanizing

Drawn rod is galvanized in a continuous in-line strand galvanizing process.



8. Finished Galvanized Strand



9. Color Coating Process (optional)

When a color coated strand is required, the galvanized strand can be coated in three different finishes: extruded; extruded bonded; and thermally fused bonded.



10. Finished Color Coated Strand



11. Weaving Stage

Finished strand is woven into specific heights and diamond sizes to produce a finished product ready for market.



12. Finished Product

Finished product awaiting shipment.



Galvanized Before Weaving

Eagle Fence Distributing has emerged as a leader in providing the finest quality domestic GBW (Galvanized Before Weaving) fabric products. Partnering with Southwestern Wire Corporation, a member of our family of

companies, we bring to the market years of experience and expertise. Our approach is proven and time tested to ensure that our GBW products exceed our highest self-implemented standards. All fabric is domestically galvanized and woven into the finished products delivered on each order.

We offer the following variety of fabric options:

- GBW Class I, a product ideal for temporary and construction application where economy and value are important.
- GBW Class III, manufactured from strand that meets coating requirements for residential and light commercial applications. 12-1/2 ga. and 11-1/2 ga. are available.

- For light commercial applications, we offer full 11 ga. fabric.
- For the Industrial /Specification market, 9 ga. and 6 ga. fabrics are stocked for immediate shipment in both Class IV (1.2 oz. coating) and Class V (2 oz. coating) that meet ***ASTM A-392 Class 2***. Mini-mesh fabric is available in mesh sizes from 3/8" and larger.



Chain-Link Fabric

Galvanized After Weaving

The Eagle chain-link fabric lineup would not be complete without a full offering of domestically woven GAW (Hot-Dipped Galvanized After Weaving) fabric. Residential grade fabrics in 12-1/2 ga. and 11-1/2 ga. are available and stocked in nominal heights. For light commercial applications we offer full 11 ga fabric. Meeting the requirements of the industrial / specification market is made simple as 9 ga. and 6 ga. fabrics are stocked for immediate shipment in both 1.2 oz. coating and 2 oz. coating. Heights and quantities may vary at your local Eagle Fence location.

Aluminized Fabric

Aluminized Chain-Link fence fabric is a rugged product that Eagle Fence Distributing leads the industry in stocking and distributing for projects and environments that require the use of high quality domestically produced aluminum coated fabric. The aluminized process begins with steel wire strand that has been hot-dipped coated with an aluminum-silicon alloy providing exceptional corrosion resistance. Like all other



fabrics, aluminized products are stocked or available in all heights and sizes.

Total aluminum fence systems are available, including aluminum fabric, framework, fittings and gates.

Privacy Slats

Eagle Fence Distributing offers a full range of privacy slats from leading manufacturers in a wide array of colors. In addition to representing the various brands, our locations stock the most popular sizes and colors.



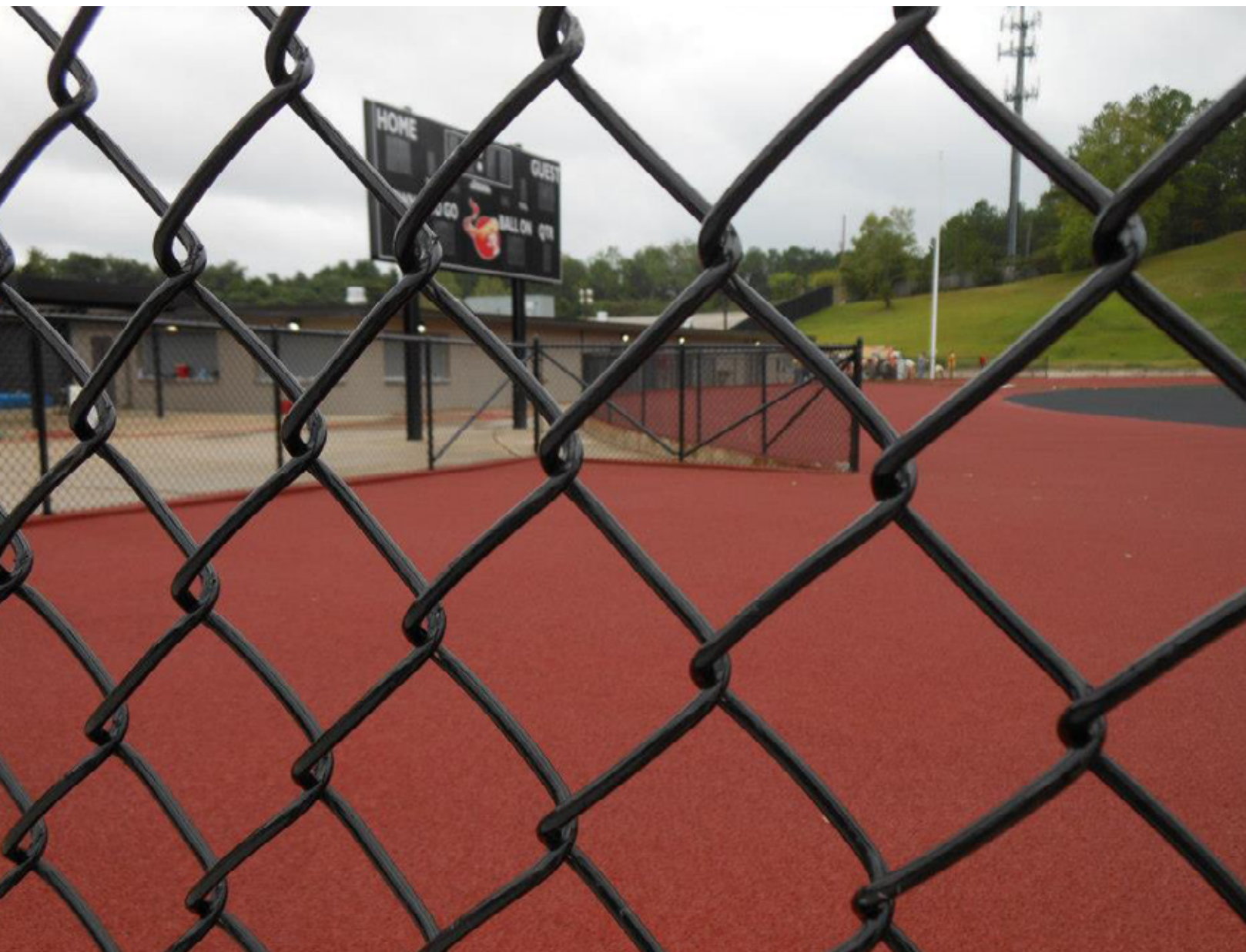
Privacy Screen

Whether your need is for a world class tennis facility, athletic arena or simply a temporary construction project requiring total privacy, we've got you covered. Privacy screen is available in opacities from as little as 70% to 100% for total security and privacy. All privacy screen products are offered in a variety of colors with most locations maintaining stock in green and black. All screen can be custom configured to meet your taping and grommet requirements. Privacy screen is a durable, attractive solution to your privacy needs.



Vinyl Coated Chain-Link Systems

As times have changed, so have the demands for different types of chain-link fence systems. Vinyl coated (PVC) chain-link fence has rapidly become one of the more popular styles of fencing offered as well as required in the marketplace today. Eagle Fence Distributing maintains one of the largest stocks of domestically produced vinyl fabric and full line systems in the industry. Our broad stock of fabric, framework, fittings, gates and accessories in practically every size means you get the product you need when you want it.



The need for aesthetics combined with strength and durability has become a requirement in many commercial and industrial chain-link fence applications. Whether your need is an athletic facility, municipal building or airport, Eagle Fence has you covered in color! Like our residential line of vinyl clad fencing, the same products and more are available to meet the requirements and specifications of any project that may arise. Our fabric is domestically produced in every type required, including extruded, extruded bonded (meets ASTM F668-2a) and fused bonded (meets ASTM F668-2b) in all nominal finishes and mesh sizes as small as 3/8". Framework is available in polyester powder coated and heavy mil thermally coated pipe for all sizes and weights. Accessories as well as gates are matched to our fence systems and your particular specification. Whether you require a standard swing gate, emergency egress gate, sliding gate or aluminum track gate, Eagle Fence is your one stop source.





Galvanized Tubing, Pipe & Framework

Residential

At every Eagle Fence Distributing location, you will find a full range of residential fence framework in stock as well as select square tubing used for various fencing applications.

Light Industrial

Eagle recognizes the need for a quality fence at a value added price. An economical S-20 or medium wall product designed for multiple applications such as light industrial or commercial projects is readily available at all locations. Made to the highest quality standards, our products are produced with coatings that provide outstanding corrosion protection.

Heavy Industrial

On your next industrial project, by preference or by specification you have a choice in product. Our locations offer both ASTM F1083 schedule 40 pipe and ASTM F1043 Group IC S-40 pipe that meet the most stringent specification requirements for high security and heavy industrial applications.



Color Tubing

Color is everywhere with the ever-growing popularity of vinyl coated chain-link fence. Eagle Fence Distributing is happy to show you our colors. All types of color chain-link fence systems have become widely used in today's marketplace.

The polymer coated (powder coat) finish on tubing and pipe offers an affordable, durable product with a three mil coating of high-quality polyester color that is applied and thermally set. The result is a finish that will retain a consistent look for a long period of time under some of the most harsh conditions. All polyester products are domestically produced and meet the requirements of ASTM F 1043, the standard specification for strength and protective coatings on steel and

industrial fence framework.

In select project specifications, a heavy mil coated pipe is required in accordance with ASTM F1043. Heavy mil pipe available at your Eagle Fence location is a pipe with a supplemental color coating of 10-15 mils of thermally fused PVC to create a rugged finish on the pipe. Heavy mil pipe, like the polyester coated products, offers great aesthetics while providing superb protection.

Standard colors available:

- Black
- Brown
- Green
- Other colors also available



To serve the demand of all your gate and hardware needs, Eagle Fence Distributing maintains an adequate stock of residential gates in both galvanized and vinyl coated finishes. A wide array of hardware choices are available that enable you to tackle any job or obstacle that may come your way.

For construction sites and special events, Eagle Fence stocks temporary fence panels and stands to accommodate your needs.



Temporary Fence Panels ►



Hi-Motion Gate System

- Inverted bottom trucks for surface/pad mounting or optional post mounting.
- Bottom gate track doubles as bottom of gate frame.
- Reduced tail section (counter-balance) required. Only 25% of opening size is necessary.
- Minimal draw pull or force ensuring smooth movement in manual or automated operation.
- Extreme opening sizes, unusual obstacles or limitations are made simple with the unique design.



Aluminum Track Cantilever Slide Gates

- Preferred choice among specifiers for a wide array of project applications.
- High traffic heavy industrial sites, aviation, correctional, municipal buildings, public utilities, military facilities and highly secure properties.
- Available in single track, double track, box frame and trollyed box frame gates for extreme openings.
- Available in bare aluminium finish or custom powder coated.



Our aluminum track cantilever slide gates are equipped with the finest available hardware to ensure a low maintenance system; fabricated from the strongest alloys, and can meet the requirements of ASTM F2200-02 and U.L. 325.

Custom Gates and Fabrication

Should you require custom fabrication on a project whether it be a custom gate or specific need, you're at the right place. Eagle Fence Distributing maintains fabricating capabilities that help you succeed on any project or overcome any obstacle. Custom gates offered include pre-hung pedestrian gates with various options such as emergency egress (panic bars), mechanical locks or electronic keypads/card readers to name a few.



Our support for gates of all type include many choices in hardware that meet the basic need of a swimming pool enclosure to the highest level of security needs whether it be a latch, hinge, lock, keypad or emergency egress device.



Aluminum Ornamental Fence

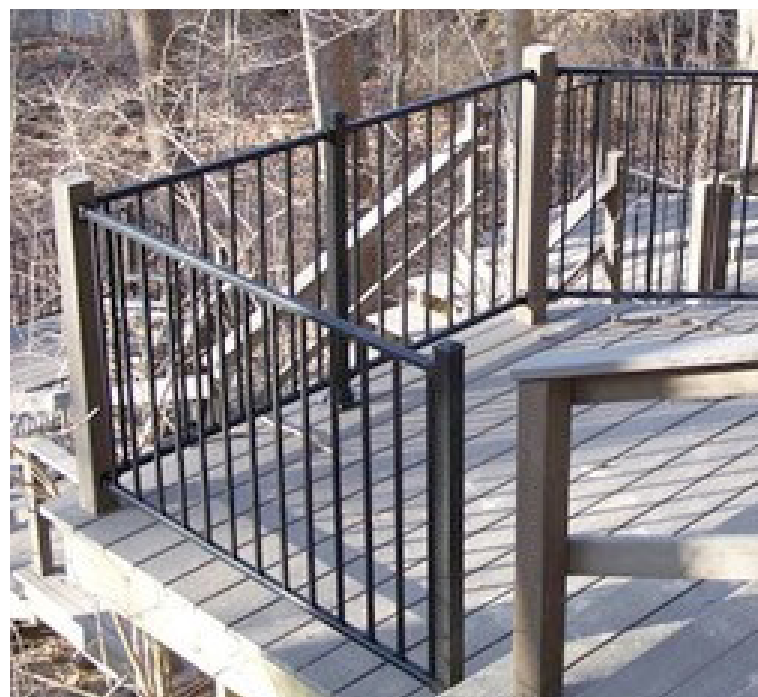
Eagle Fence Distributing offers and stocks multiple styles and colors of aluminum ornamental fence that is second to none. Product offerings from leading manufacturers ensure that your choice of aluminum fence will be the best addition to any home, business, sports facility or government project. Ornamental aluminum gates are the perfect complement to finish any aluminum fence project. At Eagle Fence, the sky is the limit to what we can provide in gates to exceed your customer's expectation. Whether the gate is a standard gate, estate gate or arch top gate, we have what you need for your next fence project. Every gate is welded construction for maximum strength and integrity. Regardless if you are searching for a residential, commercial or industrial ornamental fence, Eagle Fence has options designed to match all styles and grade demands.

Residential
Commercial
Industrial

Handrail

Looking for handrail and stair railing? You've come to the right place!

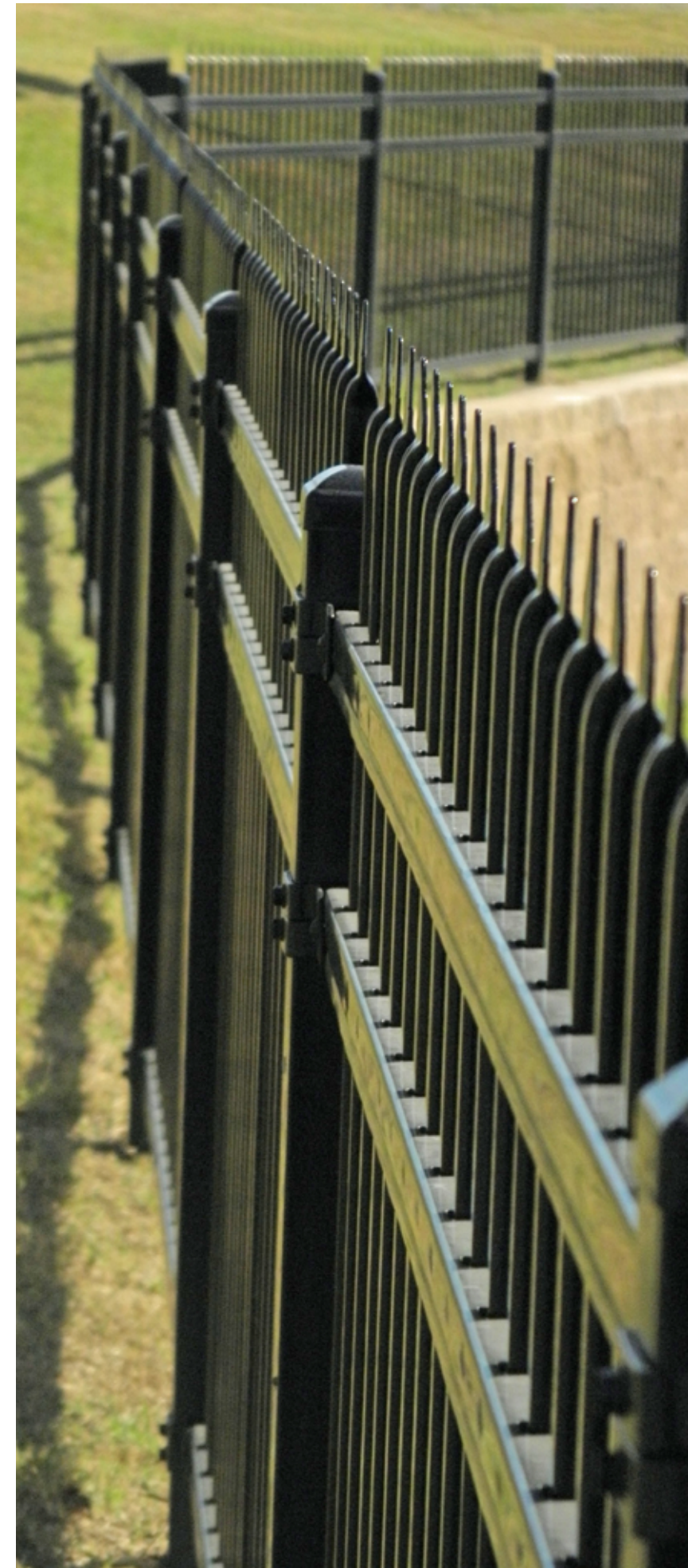
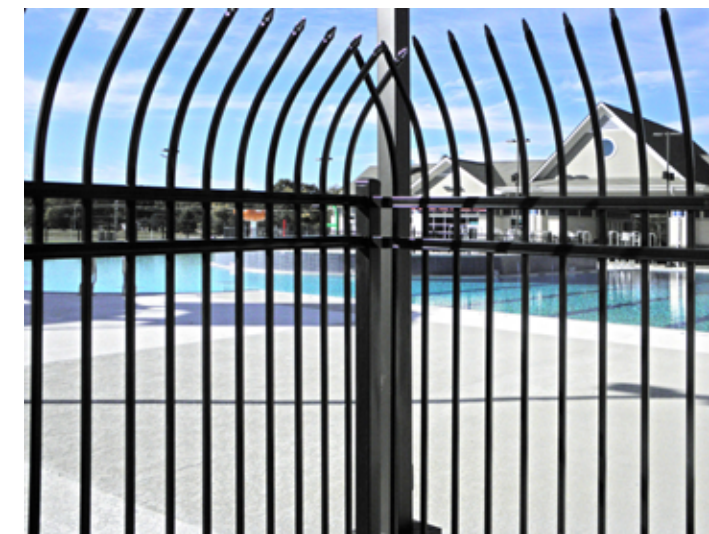
Eagle Fence offers high quality handrail products from the very best aluminum extrusions and castings that provide the strength needed for most any handrail or stair rail application. Available in factory assembled 36" and 42" heights; your project can be customized with decorative additions that can make any job a portrait of strength and beauty. Handrail sections are available in 6' and 8' sections with picket spacing set at 3-5/8". All handrails and stair rails are easily installed bracketed systems. Maintenance free aluminum handrail is a top choice over wood and other products, never requiring painting, staining or sanding.



Steel Ornamental Fence

So that we are able to meet the demands of any ornamental fence application, from residential to industrial, Eagle Fence Distributing has partnered with industry leading manufacturers and custom fabricators in order to provide you with the ideal steel ornamental fence and gate products you depend on to accommodate the needs of every project.

Ornamental steel fencing with its multi-stage coating process means a product that is practically maintenance free while possessing the look of decorative wrought-iron fencing. The durable steel construction combined with the low maintenance coating and finish has resulted in becoming a preferred choice of homeowners, developers, and the architectural community. For industrial applications or the highest levels of security projects, the use of various ornamental styles or SecuraMesh™ panels will suit your needs.



Wood Fencing

Treated Pine Wood Fencing

Homeowners have long preferred a treated pine wood fence for its high durability in the harshest elements of summer and winter. Treated pine lumber contains an environmentally safe chemical that resists rot, termites and decay. Known for the lighter colored more natural appearance, a treated pine fence can easily be complemented with a paint or stain to help preserve an appearance or match trim or decking on a home.



Gate Frames and Hardware

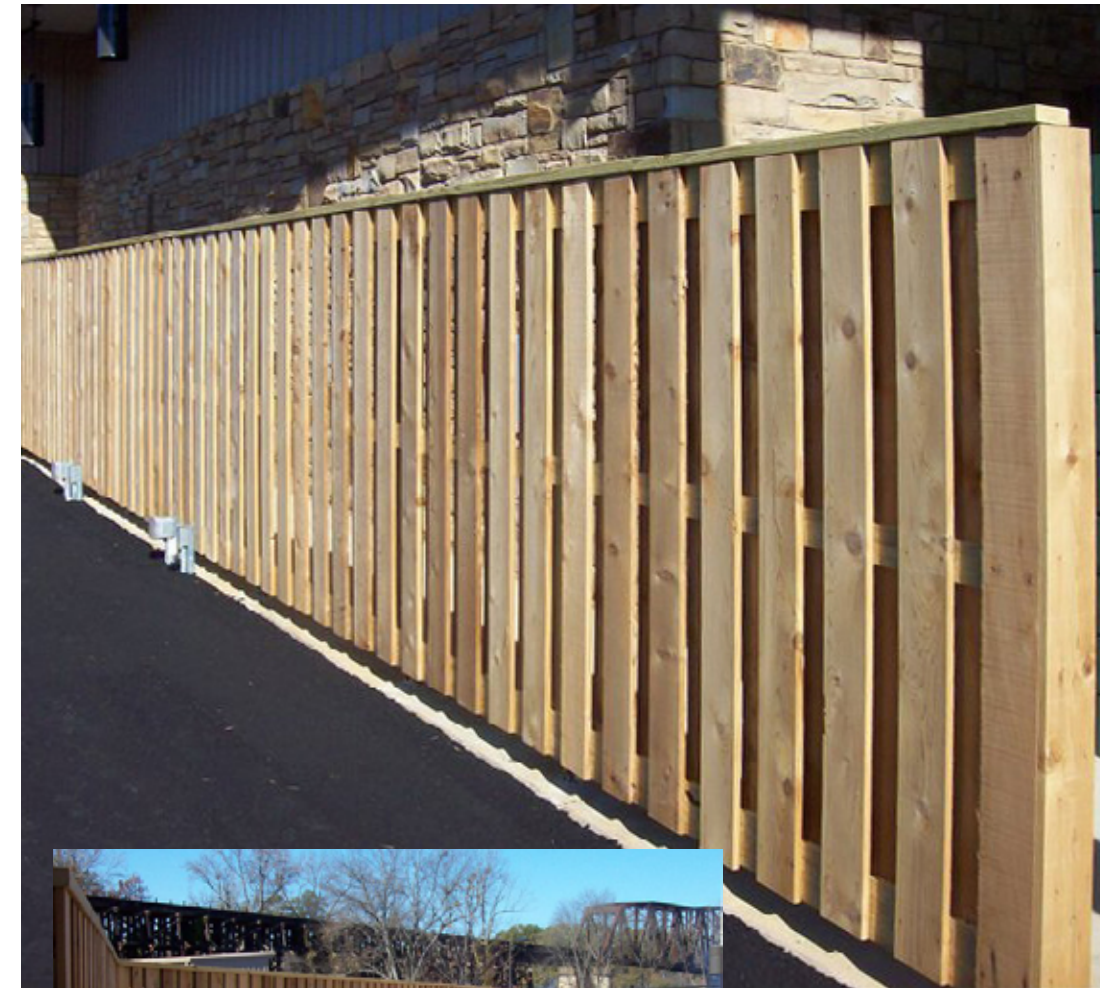
For all your wood gate needs, Eagle Fence Distributing offers adjustable steel gate frames and kits along with a broad choice of hardware options from leading manufacturers in the industry.



Cedar Wood Fencing Products

Western red cedar is one of the world's most durable woods. Natural resistance to moisture, decay and insect damage has long made western red cedar the premier choice for fencing. Cedar has twice the stability of most commonly available

softwoods. The stability is a result of its low density and shrinkage factors. It lies flat, stays straight, and holds fasteners tightly, with colors ranging from mellow ambers, reddish cinnamons to rich sienna browns. Because cedar is virtually pitch and resin free, the wood easily accepts a range of finishes, fine oils and stains. Your local Eagle Fence Distributing location maintains a variety of cedar fencing materials ready for immediate shipment.



PVC Fencing

For those customers that desire something different, turn their vision into a reality with a vinyl fence system. With no painting or staining concerns, a vinyl fence is practically maintenance free. At Eagle Fence Distributing, we represent multiple brands that offer color and finish options. If a ranch rail fence suits your needs, most Eagle locations have

stock with immediate availability. Other products available include a choice of styles in picket, semi-private, tongue and groove privacy and lattice top fencing. A full line of gates and hardware are available to match your choice of fence and custom hardware needs.

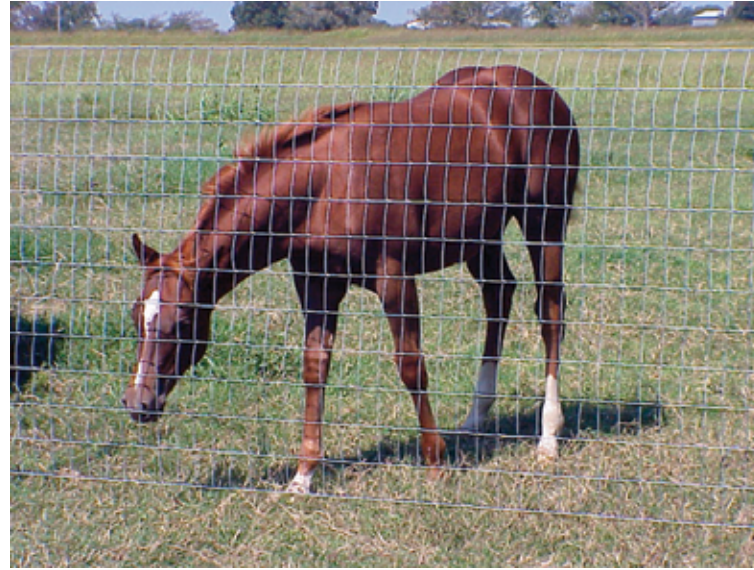


Agricultural Field/Farm Fencing

From our family of companies, Oklahoma Steel and Wire offers a complete line in both agricultural and industrial wire products by providing products that meet industry standards, devising new industry products, or improving the functionality of existing products.

Premium deer fence/game fence (8' & 10' heights) from industry leading manufacturers.

- Horse panels
- Max-tight and hinge joint horse fence
- Field fence
- Barbed wire
- V-mesh
- Sheep and goat fence
- Welded wire fabric
- Vineyard wire
- High tensile fence
- Bull panels and utility panels
- T-posts



- Starting with only the highest quality rods and our strict tolerances, we give you the comfort of knowing your product will be right every time.
- Committed to providing top-of-the-line quality in every aspect. Only the highest quality billets are used in our wire rods and coiled rebar.

- “Our only limitation is your imagination.” With on-staff engineers at Oklahoma Steel and our experienced team of sales professionals, we can help you formulate a solution for your most difficult job.

For all your D.O.T. project needs, Eagle Fence Distributing stocks field fence, t-posts and all other pipe, hardware and materials for most D.O.T. projects.



Access Control Products

In the ever changing world of technology nothing is immune to constant change. Access control is no different, therefore at Eagle Fence Distributing we strive to stay out in front of product development and changes. To better serve you as a supplier, we represent and distribute only the highest quality of products from only the top manufacturers in the industry. These methods ensure that you get the best products available in the market as well as maximize your customer satisfaction with ease of installation and a reduction in product failure or service calls.



LiftMaster

HySecurity
Simple. Reliable. Secure.

APOLLO

PRO ACCESS
SYSTEMS

Linear®
Building On Innovation. 50 Years of Innovation

DKS

MMTC Inc.

AAS AMERICAN™
ACCESS SYSTEMS

USAutomatic
THE MOST EFFICIENT SOLAR FRIENDLY GATE OPERATORS ON THE MARKET TODAY



Fittings & Hardware

No job is complete without having the right fittings and hardware to finish your project. A comprehensive product offering in both galvanized and vinyl coated fittings are available at all Eagle locations. Domestic fittings are stocked at most locations to help you supply the right product on a specification driven project. In addition, Eagle Fence distributes the highest quality of security latches, emergency egress (panic bars), mechanical locks and hardware that allows you to provide maximum security to a client requiring the best solution to their entry and exit points.



- Razor ribbon
- Pliers
- Stretcher tools
- Cement and concrete products
- Little Beaver Earth Augers
- Tension wire



Our Family of Companies





EAGLE FENCE
★ DISTRIBUTING LLC ★

BIRMINGHAM, AL

1780 Carson Road North
Birmingham, Alabama 35217
205-631-2770
877-683-5881

CHICAGO, IL

3660 W. Washington Street
Gurnee, Illinois 60031
224-610-0956
877-639-1023

HOUSTON, TX

14430 Smith Road
Humble, Texas 77396
281-741-1503
877-741-4896

www.efdistribution.com