



*Railing for the good life.*

Transferable Lifetime Limited Warranty • Virtually Maintenance Free



# Welcome

Whether you want to make your home impressive, comfortable, traditional, or distinctive - PolyRail® Vinyl Railing was designed with you in mind. PolyRail® Vinyl Railing offers a comfortable feel with a traditional look and features a range of styles, colors, and applications to enhance your vision. Just imagine the possibilities; after all, your home is your masterpiece.

## Table of Contents

Falcon	4-5
Raven	6-7
Cardinal	8-9
T-Bird	10-11
Posts, Caps, & Flairs	12-13
Rail Mounts	14
Gates & Gate Hardware	15
Continuous Handrail	16



- 1 Style: Cardinal  
Color: White
- 2 Style: Falcon  
Color: White
- Cover Style: Falcon  
Color: Tan



# Exclusive DSI Powder Coating Process

DSI's aluminum Powder Coating offers an uncompromising quality created by state-of-the-art technology. Our system provides the highest quality powder coating on the market with a lifetime-limited warranty giving you peace of mind in your investment.



1

The raw premium-grade aluminum is inspected to be free of blemishes and is not exposed to the outdoor elements.



2

The product enters a heated acidic cleaning stage to remove extrusion debris and fabrication oils.



3-6

**CLEAN:** City water rinse  
**CLEANER:** Recycling reverse osmosis water rinse  
**CLEANEST:** Pure reverse osmosis water rinse  
**SEALER:** Dried-in-place aluminum sealer



7-8

A 200 MPH air blast removes water drops from the pre-treated aluminum. A convection oven completes the dry-off process.



9

Powder is applied with 18 automated and 2 manual spray guns. Compressed process air is dried to -35°F Dew Point for superior adhesion.



10

The powder coating is then bonded and adhered to the aluminum sub-straight in a 400 degree cure stage.

## Vinyl Colors

Our vinyl is offered in two standard colors and is covered by a transferrable lifetime limited warranty per ASTM F-964 specifications.



White

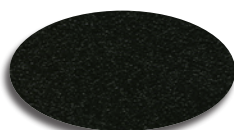


Tan

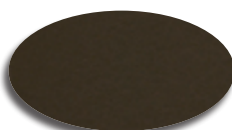
## Aluminum Baluster Colors and Aluminum Continuous Handrail Colors



Satin Black



Black Fine Texture



Ninety Bronze



Bronze Fine Texture



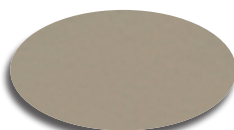
Gloss Beige



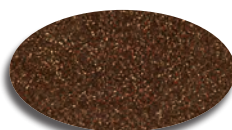
Gloss White



White Fine Texture



Clay



Speckled Walnut



Sandy Shore



Chocolate



Silver





*Falcon*

## Falcon Railing

**Creating an impressive first impression.**

You have one opportunity to make that important first impression. A freshly manicured lawn, blooming flowers, and a unique deck, porch, or patio can make your home stand out. Falcon Railing features an impressively contoured “bread-loaf” shaped top rail along with a variety of baluster options.





1

## Falcon Specifications

Railing Heights: 36", 42"

Railing Lengths: 4', 5', 6', 7', 8', 9', 10'

(rail support included with 8', 9', 10')

Stair Rail Lengths: 4', 5', 6', 7', 8', 9', 10'

Standard Vinyl Baluster: 1 3/8" x 1 3/8"

"A" Series Vinyl Baluster: 1 3/8" x 1 3/8"

(42" "A" Series balusters are Aluminum Reinforced)

Vinyl Baluster Spacing: 3 1/2"

"B" Series Aluminum Baluster: 3/4" Round

Aluminum Baluster Spacing: 3 7/8"

Crossover Railing (optional): Standard Balusters,  
"A" Series Balusters,  
"B" Series Balusters

Crossover Lengths: 10', 12', 14', 16'

(2 rail supports included with 16')

Crossover Stair Railing: Not Available

Chippendale Railing (optional): Standard Balusters

Single Chippendale Lengths: 4', 5', 6', 7', 8', 9', 10'

(rail support included with 8', 9', 10')

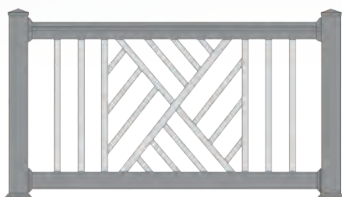
Double Chippendale Lengths: 7', 8', 9', 10'

(rail support included with 8', 9', 10')

Chippendale Stair Railing: Not Available

Compliance: ICC-ES ESR-1324

(Up to 8' sections complies with IBC & IRC)



Falcon Chippendale

### Falcon Balusters



Standard

"A" Series

"B" Series



Top Rail  
with Aluminum Reinforcement



Bottom Rail  
with Aluminum Reinforcement



2

1 Style: Falcon "B" Series  
Color: White Vinyl with Black Fine  
Texture Balusters

2 Style: Falcon  
Color: White

◀ Style: Falcon "A" Series  
Color: White





*Raven*

## Raven Railing

**Bringing you home to comfort.**

Home is where you go to escape the stresses of the day. Home is where you go to relax before starting all over again. Home is comfort. Raven railing features a comfortably contoured top rail complimented by a variety of baluster options.





## Raven Specifications

Railing Heights: 36", 42"

Railing Lengths: 4', 5', 6', 7', 8', 9', 10'

(rail support included with 7', 8', 9', 10')

Stair Rail Lengths: 4', 5', 6', 7', 8', 9', 10'

Standard Vinyl Baluster:  $\frac{7}{8}$ " x  $1\frac{1}{2}$ "

"A" Series Vinyl Baluster:  $\frac{7}{8}$ " x  $1\frac{1}{2}$ "

(42" "A" Series balusters reinforced with aluminum)

Vinyl Baluster Spacing:  $2\frac{7}{8}$ "

"B" Series Aluminum Baluster:  $\frac{3}{4}$ " Round

Aluminum Baluster Spacing:  $3\frac{7}{8}$ "

Crossover Railing (optional): Standard Balusters,  
"A" Series Balusters,  
"B" Series Balusters

Crossover Lengths: 10', 12', 14', 16'

(2 rail supports included with 14' and 16')

Crossover Stair Railing: Not Available

Compliance: ICC-ES ESR-1324

(Up to 7" sections complies with IBS & IRC)

### Raven Balusters



Standard "A" Series "B" Series



Top Rail

with Aluminum Reinforcement



Bottom Rail

with Aluminum Reinforcement



1 Style: Raven "A" Series  
Color: White

2 Style: Raven "B" Series  
Color: Tan Vinyl with Black Fine Texture Balusters

3 Style: Raven Crossover  
Color: Tan

◀ Style: Raven  
Color: Tan





*Cardinal*

## Cardinal Railing

### **The beginning of new traditions.**

From childhood to adulthood, tradition is what unites our lives. Good food, the gathering together of family and friends, and great outdoor experiences are traditions we all know, traditions we all want. Cardinal Railing features a traditional top rail accented by a variety of baluster options.





## Cardinal Specifications

Railing Heights: 36", 42"

Railing Lengths: 4', 5', 6', 7', 8', 9', 10'

(rail support included with 8', 9', 10')

Stair Rail Lengths: 4', 5', 6', 7', 8', 9', 10'

Standard Vinyl Baluster:  $\frac{7}{8}$ " x  $1\frac{1}{2}$ "

"A" Series Vinyl Baluster:  $\frac{7}{8}$ " x  $1\frac{1}{2}$ "

(42" "A" Series balusters reinforced with aluminum)

Vinyl Baluster Spacing:  $2\frac{7}{8}$ "

"B" Series Aluminum Baluster:  $\frac{3}{4}$ " Round

Aluminum Baluster Spacing:  $3\frac{7}{8}$ "

Crossover Railing (optional): Standard Balusters,  
"A" Series Balusters,  
"B" Series Balusters

Crossover Lengths: 10', 12', 14', 16'

(2 rail supports included with 16')

Crossover Stair Railing: Not Available

Chippendale Railing (optional): Standard Balusters

Single Chippendale Lengths: 4', 5', 6', 7', 8', 9', 10'

(rail support included with 8', 9', 10')

Double Chippendale Lengths: 7', 8', 9', 10'

(rail support included with 8', 9', 10')

Chippendale Stair Railing: Not Available

Compliance: ICC-ES Legacy Report

(No. 21-42) Tested up to 8' sections



### Cardinal Balusters



Standard "A" Series "B" Series



Top Rail

with Aluminum Reinforcement



Bottom Rail

with Aluminum Reinforcement

1 Style: Cardinal "B" Series  
Color: Tan Vinyl with Speckled  
Walnut Balusters

2 Style: Cardinal Crossover  
Color: Tan

3 Style: Cardinal Double  
Chippendale  
Color: White

4 Style: Cardinal "A" Series  
Color: White

◀ Style: Cardinal  
Color: White



A white T-Bird Railing system is shown on a deck. The railing features a distinctive 'T' shaped top rail and vertical balusters. The deck is made of white composite planks. In the background, there is a dense forest of trees with green and yellow foliage, and mountains are visible in the distance under a clear sky.

*T-Bird*

## T-Bird Railing

**Enriched with distinction.**

Your home is unique. Your home is unquestionably exceptional. Your home is distinct. T-Bird Railing features a distinctive “T” shaped top rail creating a “Drink Rail” highlighted with a variety of baluster options.





## T-Bird Specifications

Railing Heights: 36", 42"

Railing Lengths: 4', 5', 6', 7', 8', 9', 10'

(rail support included with 8', 9', 10')

Stair Rail Lengths: 4', 5', 6', 7', 8', 9', 10'

Standard Vinyl Spindle: 1 3/8" x 1 3/8"

"A" Series Vinyl Spindle: 1 3/8" x 1 3/8"

(42" "A" Series Spindles are Aluminum Reinforced)

Vinyl Spindle Spacing: 3 1/2"

"B" Series Aluminum Spindle: 3/4"

Round Aluminum Spindle Spacing: 3 7/8"

Crossover Railing (optional): Standard Spindles,  
"A" Series Spindles,  
"B" Series Spindles

Crossover Lengths: 10', 12', 14', 16'

(2 rail supports included with 16')

Crossover Stair Railing: Not Available

Chippendale Railing (optional): Standard Spindles

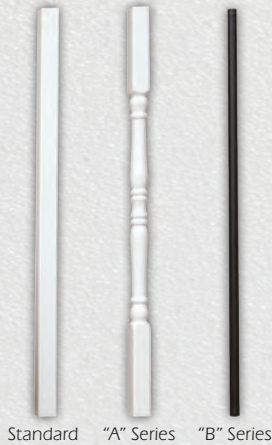
Single Chippendale Lengths: 4', 5', 6', 7', 8', 9', 10'  
(rail support included with 8', 9', 10')

Double Chippendale Lengths: 7', 8', 9', 10'

(rail support included with 8', 9', 10')

Chippendale Stair Railing: Not Available

### T-Bird Balusters



Standard "A" Series "B" Series



Top Rail  
with Aluminum Reinforcement



Bottom Rail  
with Aluminum Reinforcement



T-Bird Chippendale



1 Style: T-Bird "B" Series  
Color: Tan Vinyl with Satin  
Black Spindles

➤ Style: T-Bird  
Color: Tan

2 Style: T-Bird  
Color: White

3 Style: T-Bird  
Color: Tan





## Vinyl Posts

## Column Clad Post Wraps

The Wood Post Supplies Load Capacity



Fluted Column Clad Ratchets to Lock Together



The Beautiful Vinyl Cladding Will Last for Years.



Smooth Column Clad Ratchets to Lock Together



Smooth Column Clad Wraps Over the Wood Post - No Screws Needed

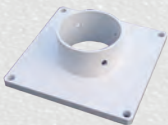
4" Post Sleeve    5" Post Sleeve or Support Post    6" Post Sleeve    4" "A" Series Support Post    5" "A" Series Support Post    5" Victorian Support Post    Fluted (Special Order)    Smooth



5" Square Support Posts are Reinforced by Sturdy Corrugated Aluminum



"A" Series and Victorian Support Posts are Reinforced by Sturdy Aluminum



5" Top & Bottom Hurricane Mount for Square Support Post



5" Top & Bottom Hurricane Mounts are Tested for High Wind Loads for 5" "A" Series Post



4" Top & Bottom Post Mount Plates



5" Top & Bottom Post Mount Plates

## Vinyl Posts Specifications & Column Clad Specifications

	4" Post Sleeve	4" "A" Series Post	4" "A" Series Support Post	5" Post Sleeve	5" Support Post	5" "A" Series Support Post	5" Victorian Support Post	6" Post Sleeve
HEIGHTS	38", 44", 48", 54" 8', 9', 10'	38", 44", 48", 52"	9'	38", 44", 48", 54" 8', 9', 10'	8', 9', 10'	9', 10'	9'	38", 44", 48", 54" 10'
LOAD CAPACITY	Non-Load Bearing w/o Wood Post	Non-Load Bearing w/o Wood Post	3,900 lb.	Non-Load Bearing w/o Wood Post	8' = 12,000 lb.	9' = 8,400 lb.	9' = 8,400 lb.	Non-Load Bearing w/o Wood Post



## Vinyl Post Caps



**Flat Cap**  
4", 5", 6"



**Trim Cap**  
4", 5"



**Gothic Cap**  
4", 5"



**Ball Cap**  
4", 5"



**OPTIONAL MAGENA STAR  
ORNAMENTAL LOW  
VOLTAGE LIGHTS**  
4", 5"

For More Information visit  
[magenastar.com](http://magenastar.com)

"A" Series Decorative Post  
Caps are Easily Attached  
with Vinyl Adhesive  
(Cap is included with Post)



## Vinyl Post Flairs



**4" SNAP LOCK FLAIR  
(1-PIECE)**



**4" FLAIR  
(2-PIECE)**



**5" FLAIR  
(1-PIECE)**  
Use with Square  
Support Posts  
or Sleeves



**5" DECORATIVE  
FLAIR  
(4-PIECE)**  
Use with  
Decorative  
Support Posts



**6" DECORATIVE  
FLAIR  
(1-PIECE)**



**COLUMN CLAD  
FLAIR  
(4-PIECE)**  
(For Smooth and  
Fluted Column Clad)

Posts

## 4" IBC and IRC Adjustable Post Mounts

Requires 4" (.135" Wall) Post Sleeve

### IBC (HEAVY DUTY) POST MOUNTS:

- IBC Approved
- 3.69" Tube
- .060" Wall
- 1/2" x 5 1/2" square plate with 8 fasteners
- Shims and leveling bolts included
- Available in 37", 43", 47" & 53" lengths



IBC Post



Top View



**43" IBC  
Post Mount**

### IRC (STANDARD) POST MOUNTS:

- IRC Approved
- 3.69" Tube
- .060" Wall
- 1/4" x 5 1/2" square plate with 4 fasteners
- Shims and leveling bolts included
- Available in 37", 43", 47" & 53" lengths



**37" IRC  
Post Mount**



IRC Post



## Hidden Screw Rail Mounts

### Standard Wall Mounts:

1-4 pack is included inside each boxed railing section.

A 4 pack contains (2) top mounts, (2) bottom mounts, and screws.

Raven



Top Rail Mount



Bottom Rail Mount

T-Bird



Top Rail Mount



Bottom Rail Mount

Falcon



Top Rail Mount



Bottom Rail Mount

Cardinal



Top/Bottom Rail Mount

### Standard Stair Mounts:

1-4 pack is included inside each boxed stair railing section.

A 4 pack contains (2) top mounts, (2) bottom mounts, and screws.



Top Stair Mount  
(factory pre-cut)



Bottom Stair/Angle Mount



Top Stair Mount



Bottom Stair Mount



Top Stair Mount



Bottom Stair Mount



Top/Bottom Stair Mount

### Optional Specialty Mounts:

These mounts are not included with boxed sections.

A 4 pack contains (2) top mounts, (2) bottom mounts, and screws.



Top Stair/Angle Mount  
(uncut)



Bottom Stair/Angle Mount



Top 45° Mount  
(factory pre-cut)



Bottom 45° Mount  
(factory pre-cut)



Top/Bottom Angle Mount



Top 45° Mount



Bottom 45° Mount

### 8" and 10" Round Column Adapters



Not Available in 6"

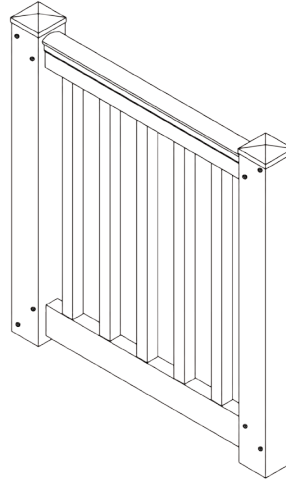
### Rail Supports





## Gates and Hardware

Falcon Gate



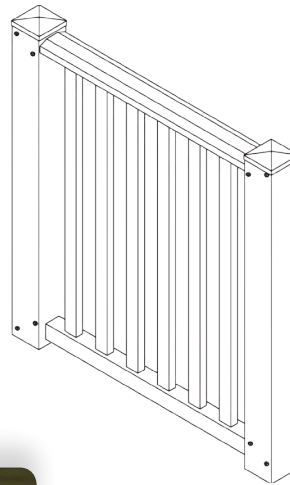
Matching gates available for each style of railing

Available in 36" W and 48" W openings

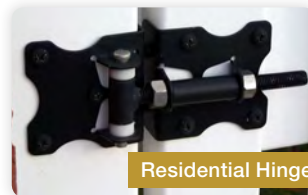
Aluminum Reinforced Frame

*Special Width Gates Available Upon Request*

Raven Gate



Cardinal Gate



Residential Hinge



Residential Latch



# CHR

## Continuous Handrail

### ALUMINUM

## ADA Compliant Handrail

A variety of rail lengths and accessories complete this system. Available in 8', 10', & 16' Rail Lengths.

Available in all the colors shown on page 3.



Additional components may be available. Contact Customer Service for more information.



1-3/8" Handrail



Internal Connector



Collar Rings  
(to cover splice)



180° Elbow



Wall Return



Adjustable Elbow



90° Elbow



Inside Corner Mount  
(attaches to post)



Internal End Cap



Wall Mount



Extended  
Wall Mount



Wall-End Mount



**Digger  
Specialties  
Inc.**



We have tried to make this catalog comprehensive and factual. We reserve the right to discontinue at any time, without notice, colors, materials, equipment and availability. Since some information may have been updated since the time of printing, we are not responsible for typographical or pictorial errors. Materials shown may vary slightly from actual colors. ©Digger Specialties 2017

diggerspecialties.com

SP04/17 99694