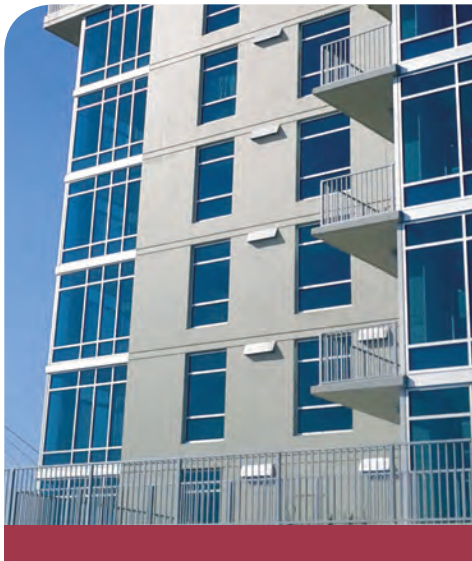




Welcome Home

Home is the foundation that supports the rest of everything in life.



Tuscany C10
Riviera C30, C30R, C31, C32, C33, C34

CCRR-0163 complies with IBC, IRC, and FBC



You cherish your home and embrace your family and friends. You work hard to create a place where you can spend quality time enjoying your life's journey.

Westbury® Aluminum Railing adds a level of beauty, distinction, and lasting value to your home.
























- By selecting the color that fits your home, you are adding beauty.
- By selecting the design that fits your lifestyle, you are adding distinction.
- By selecting one of our virtually maintenance-free aluminum railing systems, you are adding lasting value.

We welcome you home with Westbury® Aluminum Railing.



Welcome Home

CONTENTS

		Tuscany	4
		Montego	6
		Riviera.	8
		Riviera "R"	10
		Riviera I	11
		Riviera II.	12
		Riviera III	14
		Riviera IV	15
		Veranda	16
		Drink Rail.	18
		Powder Coating	20
		Colors	21
		Accessories	22
		Aluminum Continuous Handrail . . .	23

TESTING RESULTS

CCRR-0163 complies with IBC, IRC, and FBC. The following Westbury® Railing Products are included in CCRR-0163: C10, C101, C30, C301, C30R, C301R, C31, C311, C32, C321, C33, C331, C34, C341, C70, C80, 2 ½ " Power Post, 4" Plain Post, and 2" Heavy Duty Post.

Note: Please check with local code authorities for requirements.

A Style: Tuscany
Color: Bronze Fine Texture

B Style: Montego
Color: Black Fine Texture

C Style: Riviera
Color: Bronze Fine Texture

D Style: Veranda
Color: Satin Black

E Style: Montego (Special 3-Rail)
Color: Satin Black





A



B

Style C10*

From the stylish top rail to the classic bottom rail to the ideal 3/4" square balusters, Style C10 compliments the most distinguished decks and patios.

Style C101

If you prefer a more open viewing area with the classic look of balusters, Style C101 does just that. The 3/4" round balusters leave an airy feeling while maintaining the security of an enclosed railing.

A Style: C10 Radius
Color: Satin Black

B Style: C101
Color: Black
Fine Texture

Tuscany



C10*

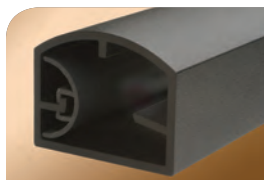
C101

SPECIFICATIONS

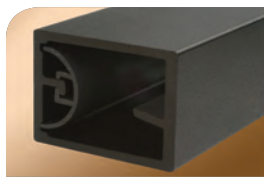
- Railing Heights: 36", 42"
- Railing Lengths: 4', 5', 6', 7', 8'
- Stair Rail Lengths*: 4', 5', 6', 7', 8'
- C10 Baluster: 3/4" x 3/4" x (.045" wall)
- C101 Baluster: 3/4" Round (.050" wall)
- Baluster Spacing: 3.875", 3.625" Stairs
- Stylish Top Rail: 1-3/4" w (.090") x 1-3/8" t (.085")
- Bottom Rail: 1-3/4" w (.090") x 1-1/4" t (.120")
- Vinyl Insert Baluster Retainer (Top and Bottom Rails)
- Bottom Rail Support: 7', 8'
- Adjustable Gates: 36"W, 48"W, and 60"W Openings

NOTE: Baluster end spacing may vary by length.

All sections do not come out even on each end as shown above.

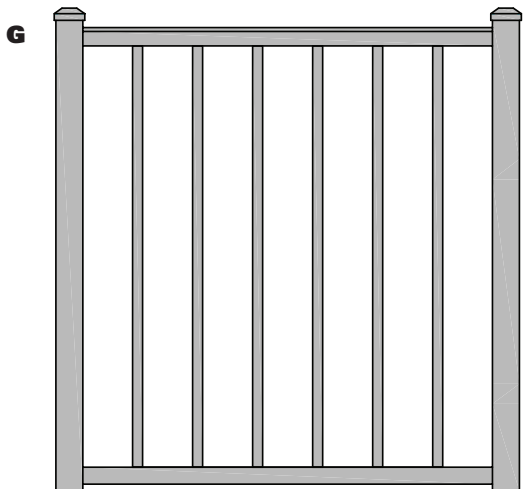


Top Rail Profile



Bottom Rail Profile

A stylish 1-3/4" x 1-3/8" top rail combined with the 1-3/4" x 1-1/4" classic bottom rail creates a streamlined design sure to appeal to those with a touch of class.



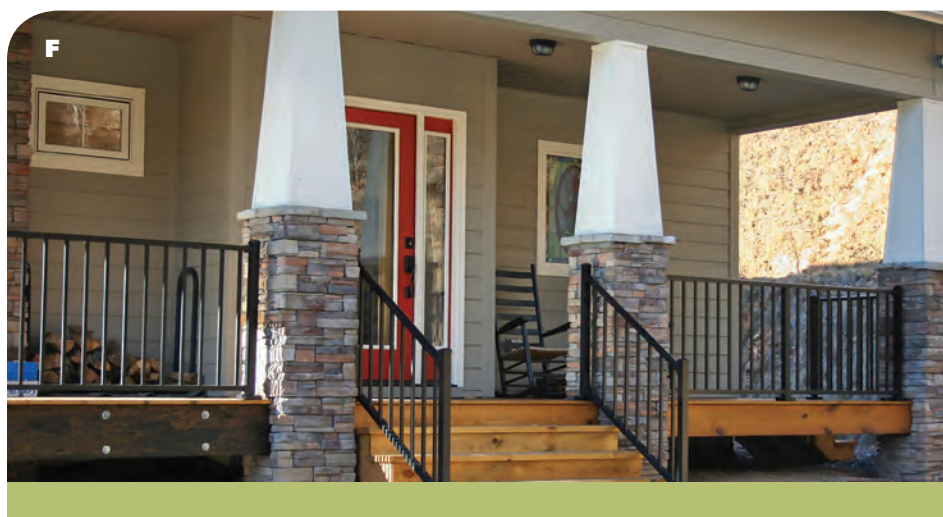
*For Stair Rail Racking Information visit our website.

Styles C10* & C101

The Tuscany Series adds a touch of class with classic 2-rail designs. These designs are accented with a stylish top rail and 3/4" square or round balusters along with a variety of satin, textured, and multi-colored finishes, and a lifetime limited warranty. Featuring classic designs to warm your heart as you are greeted home.



E Style: C10 With Level Crossover Post
Color: Bronze Fine Texture



F Style: C10 With Level Crossover Post
Color: Satin Black

G Style: C10 Adjustable Gate

CCRR-0163 complies with IBC, IRC, and FBC



*For 4' through 6' Sections



A



B



C

A Style: C20 Radius
(Special 3-Rail)
Color: Satin Black

B Style: C20 Radius
Color: Satin Black

C Style: C20 Radius
Color: Satin Black

Montego



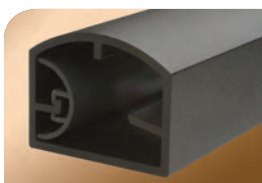
C20

SPECIFICATIONS

- Railing Heights: 36", 42"
- Railing Lengths: 4', 5', 6', 7', 8'
- Stair Rail Lengths*: 4', 5', 6', 7', 8'
- Architectural Baluster: 3/4" x 3/4" x (.053" wall)
- Architectural Baluster Spacing: 3.875", 3.625" Stairs
- Stylish Top Rail: 1-3/4" w (.090") x 1-3/8" t (.085")
- Bottom Rail: 1-3/4" w (.090") x 1-1/4" t (.120")
- Vinyl Insert Baluster Retainer (Top and Bottom Rails)
- Bottom Rail Support: 7', 8'

NOTE: Baluster end spacing may vary by length.

All sections do not come out even on each end as shown above.

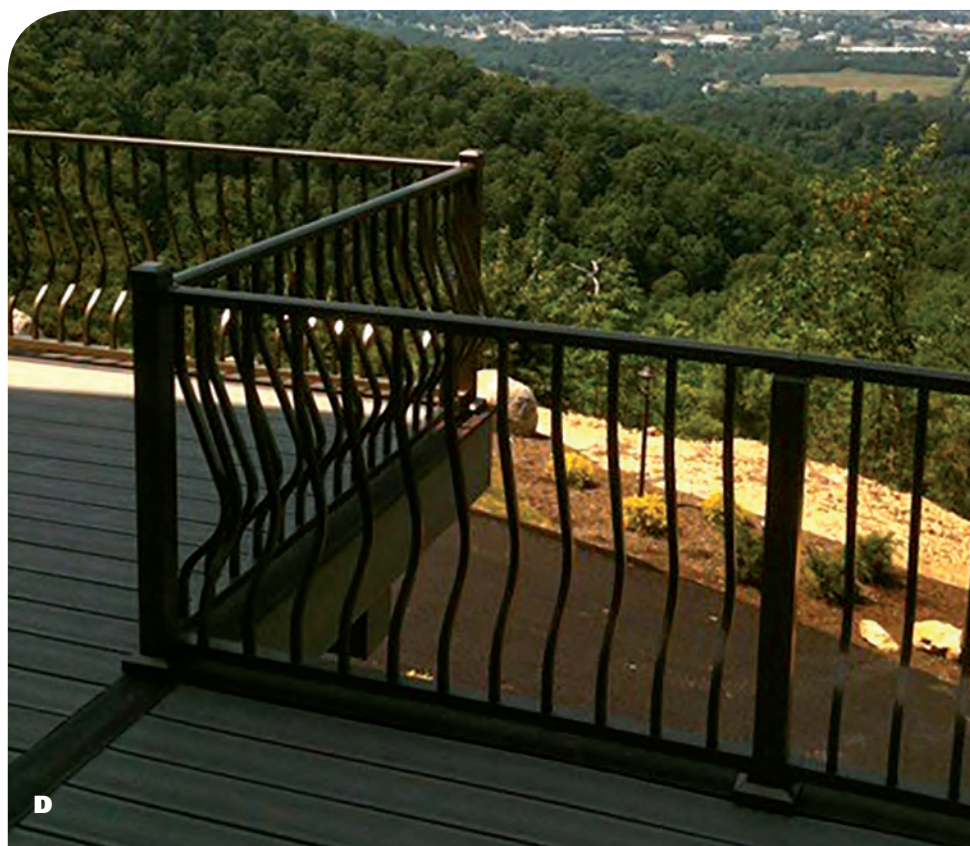


Top Rail Profile



Bottom Rail Profile

The eye-catching shapes of the rails compliment the contour of the architectural baluster.

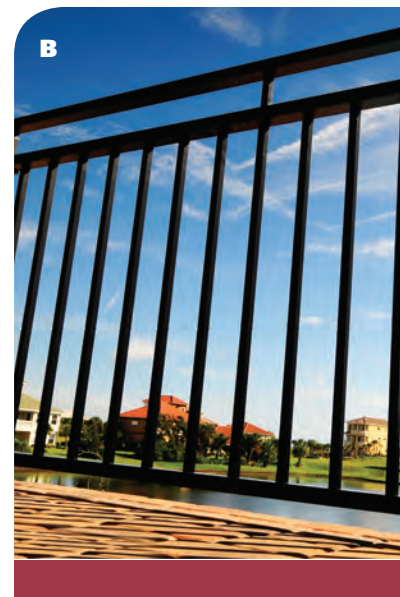


D Style: C20
Color: Satin Black



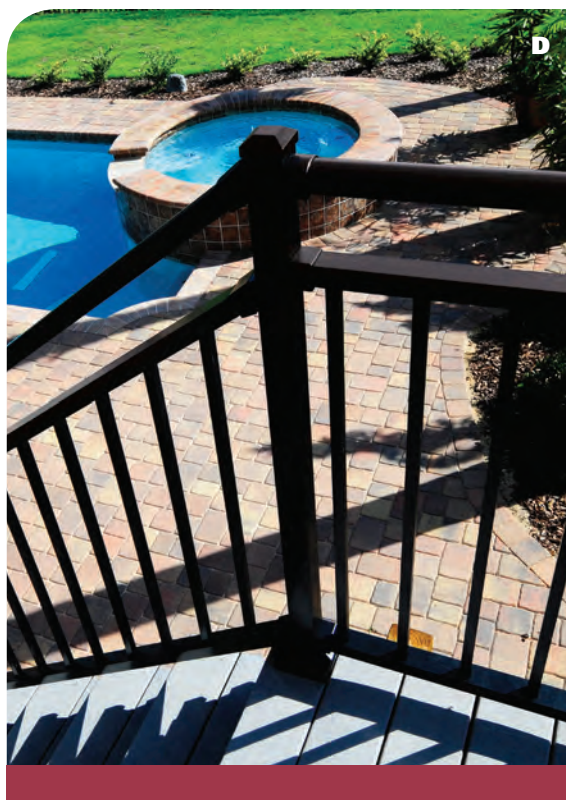
Style C30*

With the open top space and 3/4" balusters filling in the bottom area, Style C30 adds a rich presence to your outdoor living space.



Style C301

For a unique look to fit your personality, Style C301 opens your view by utilizing 3/4" round balusters.



A Style: C30
With Level
Crossover Post
Color: Satin Black

B Style: C30
Color: Satin Black

C Style: C30
Color: Satin Black

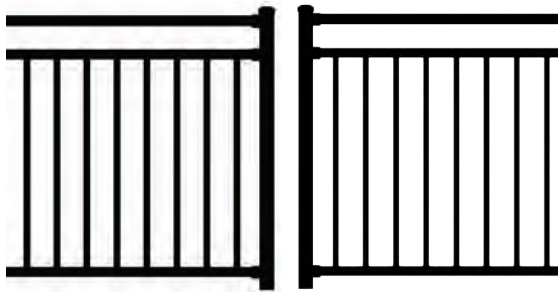
D Style: C30
Color: Satin Black

Note: 7' & 8' Section Center Picket
Between Mid and Top Rail

CCRR-0163 complies with IBC, IRC, and FBC



*For 4' through 6' Sections



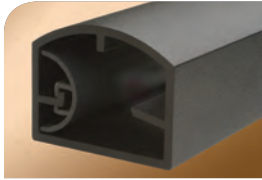
C30*

C301

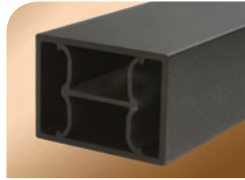
SPECIFICATIONS

- Railing Heights: 36", 42"
- Railing Lengths: 4', 5', 6', 7', 8'
- Stair Rail Lengths*: 4', 5', 6', 7', 8'
- C30 Baluster: 3/4" x 3/4" x (.045" wall)
- C301 Baluster: 3/4" Round (.050" wall)
- Baluster Spacing: 3.875", 3.625" Stairs
- Stylish Top Rail: 1-3/4" w (.090") x 1-3/8" t (.085")
- Mid Rail: 1-3/4" w (.070") x 1-1/4" t (.070")
- Bottom Rail: 1-3/4" w (.090") x 1-1/4" t (.120")
- Vinyl Insert Baluster Retainer (Top, Mid and Bottom Rails)
- Bottom Rail Support: 5', 6', 7', 8'
- Adjustable Gates: 36"W, 48"W, and 60"W Openings

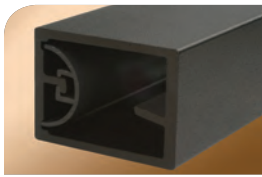
NOTE: Baluster end spacing may vary by length.
All sections do not come out even on each end as shown above.
7' & 8' sections have center support between top and mid rail.
All radius sections have mid rail support.



Top Rail Profile



Mid Rail Profile

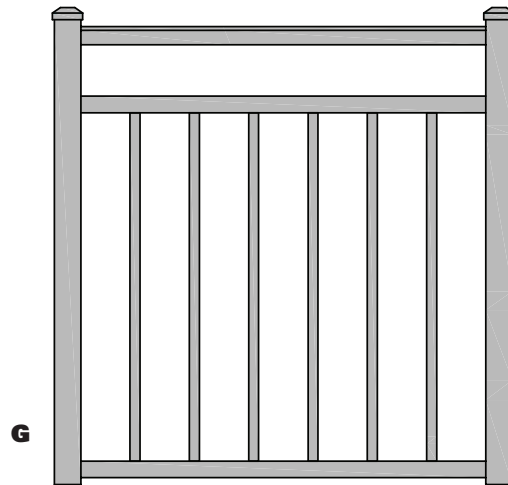


Bottom Rail Profile

A sleek designed top rail and the esthetically shaped mid and bottom rails create a harmonious appearance.

Riviera

Styles C30* & C301



G

E Style: C30
Color: Bronze
Fine Texture

F Style: C30 Radius with
Magna Star Solar Lights
Color: Satin Black

G Style: C30 Adjustable Gate



True Close Hinge



Lock Latch Deluxe, Back



Lock Latch Deluxe, Front



Magna-Latch

CCRR-0163 complies with IBC, IRC, and FBC



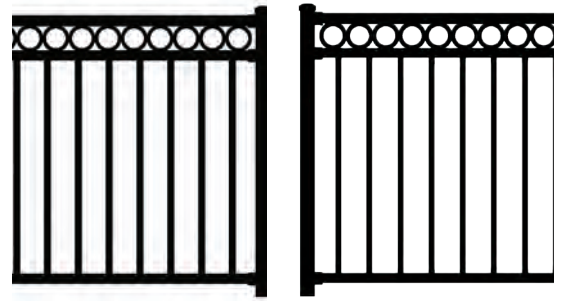
*For 4' through 6' Sections

*For Stair Rail Racking Information visit our website.

Riviera "R"

Styles C30R* & C301R

Adding rings to the 3-rail design gives it a sophisticated appearance. With an option of Style C30R 3/4" square or Style C301R 3/4" round balusters, you can create your own design to fit your lifestyle.



C30R*

C301R

SPECIFICATIONS

- Railing Heights: 36", 42"
- Railing Lengths: 4', 5', 6', 7', 8'
- Stair Rail Lengths*: 4', 5', 6', 7', 8'
- C30R Baluster: 3/4" x 3/4" x (.045" wall)
- C301R Baluster: 3/4" Round (.050" wall)
- Baluster Spacing: 3.875", 3.625" Stairs
- Stylish Top Rail: 1-3/4" w (.090") x 1-3/8" t (.085")
- Mid Rail: 1-3/4" w (.070") x 1-1/4" t (.070")
- Bottom Rail: 1-3/4" w (.090") x 1-1/4" t (.120")
- Vinyl Insert Baluster Retainer (Top, Mid and Bottom Rails)
- Bottom Rail Support: 5', 6', 7', 8'
- Adjustable Gates: 36"W, 48"W, and 60"W Openings

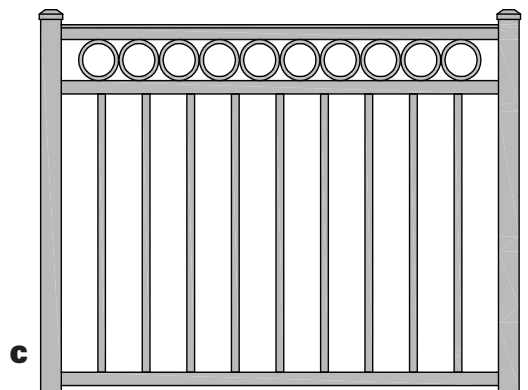
NOTE: Baluster end spacing may vary by length.
All sections do not come out even on each end as shown above.



A Style: C30R
Color: Gloss White

B Style: C301R
Color: Black Fine Texture

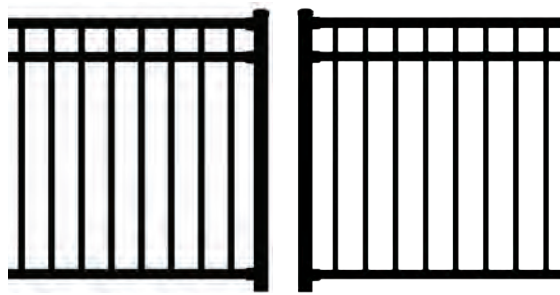
C Style: C30R Adjustable Gate



CCRR-0163 complies with IBC, IRC, and FBC



*For 4' through 6' Sections



C31*

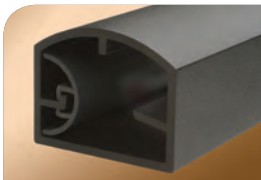
C311

SPECIFICATIONS

- Railing Heights: 36", 42"
- Railing Lengths: 4', 5', 6', 7', 8'
- Stair Rail Lengths*: 4', 5', 6', 7', 8'
- C31 Baluster: 3/4" x 3/4" x (.045" wall)
- C311 Baluster: 3/4" Round (.050" wall)
- Baluster Spacing: 3.875", 3.625" Stairs
- Stylish Top Rail: 1-3/4" w (.090") x 1-3/8" t (.085")
- Mid Rail: 1-3/4" w (.070") x 1-1/4" t (.070")
- Bottom Rail: 1-3/4" w (.090") x 1-1/4" t (.120")
- Vinyl Insert Baluster Retainer (Top, Mid and Bottom Rails)
- Bottom Rail Support: 5', 6', 7', 8'
- Adjustable Gates: 36"W, 48"W, and 60"W Openings

NOTE: Baluster end spacing may vary by length.

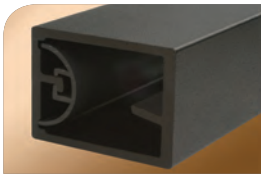
All sections do not come out even on each end as shown above.



Top Rail Profile



Mid Rail Profile



Bottom Rail Profile

Riviera I

Styles C31* & C311

You can create a high quality appearance with the designs of Style C31 or C311. Style C31 utilized a 3-rail design including 3/4" square balusters while Style C311 is comprised of the 3-rail design along with 3/4" round balusters.



A Style: C31
Color: Gloss White

CCRR-0163 complies with IBC, IRC, and FBC



*For 4' through 6' Sections

*For Stair Rail Racking Information visit our website.



Style C32*

The unparalleled design of Style C32 is created by the stylish top rail, classic mid and bottom rails, and 3/4" square balusters.

Style C321

Another option is the smooth feel of Style C321 created by 3/4" round balusters

A Style: C32
Color: Bronze
Fine Texture

B Style: C321
Color: Gloss White

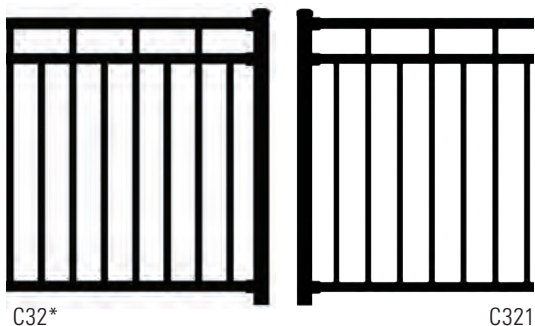
C Style: C321
Color: Speckled Walnut



CCRR-0163 complies with IBC, IRC, and FBC



*For 4' through 6' Sections



Riviera II

Styles C32* & C321

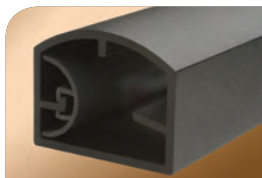
The Riviera II Series embraces a proud statement by taking the ordinary to the extraordinary. The look and feel of every other Baluster in the top section compliments the full balusters below.

SPECIFICATIONS

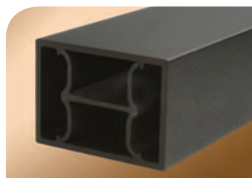
- Railing Heights: 36", 42"
- Railing Lengths: 4', 5', 6', 7', 8'
- Stair Rail Lengths*: 4', 5', 6', 7', 8'
- C32 Baluster: 3/4" x 3/4" x (.045" wall)
- C321 Baluster: 3/4" Round (.050" wall)
- Baluster Spacing: 3.875", 3.625" Stairs
- Stylish Top Rail: 1-3/4" w (.090") x 1-3/8" t (.085")
- Mid Rail: 1-3/4" w (.070") x 1-1/4" t (.070")
- Bottom Rail: 1-3/4" w (.090") x 1-1/4" t (.120")
- Vinyl Insert Baluster Retainer (Top, Mid and Bottom Rails)
- Bottom Rail Support: 5', 6', 7', 8'
- Adjustable Gates: 36"W, 48"W, and 60"W Openings

NOTE: Baluster end spacing may vary by length.

All sections do not come out even on each end as shown above.



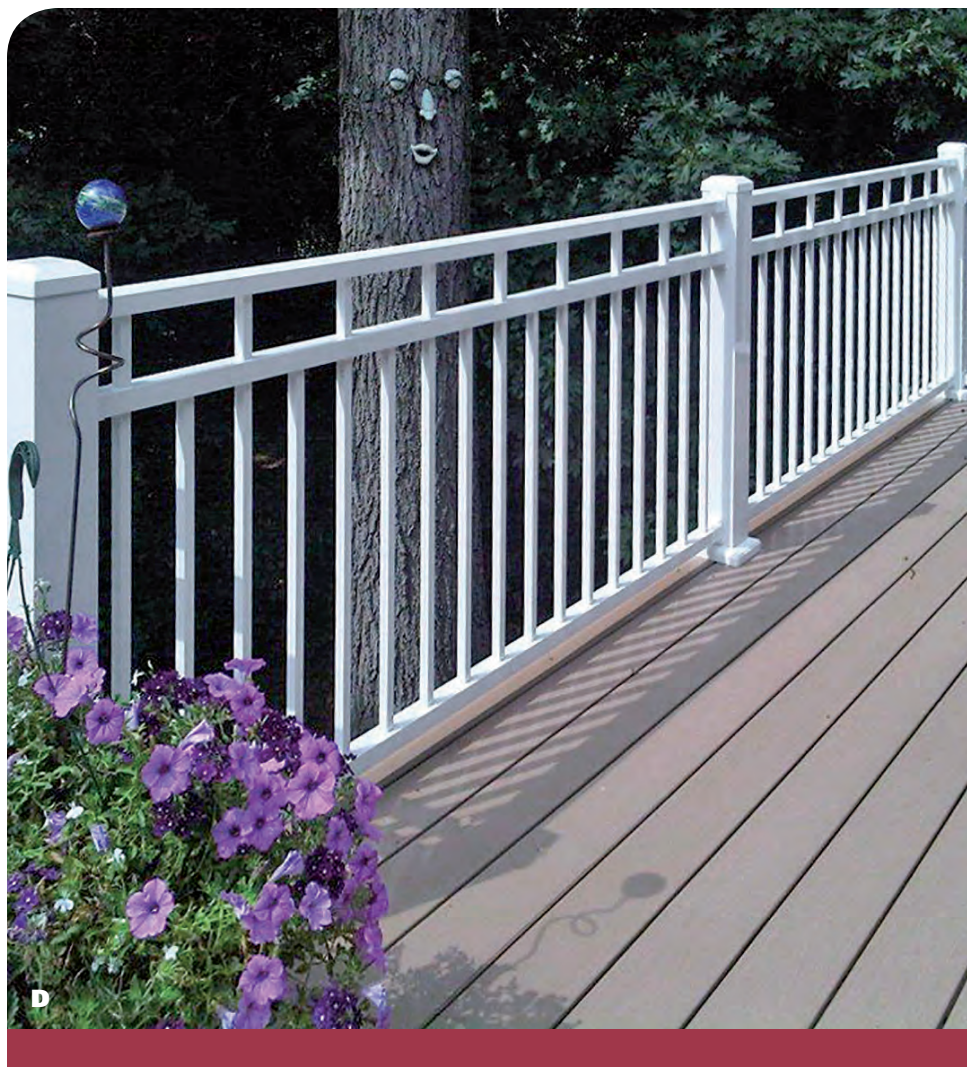
Top Rail Profile



Mid Rail Profile



Bottom Rail Profile



D Style: C32
Color: Gloss White

CCRR-0163 complies with IBC, IRC, and FBC



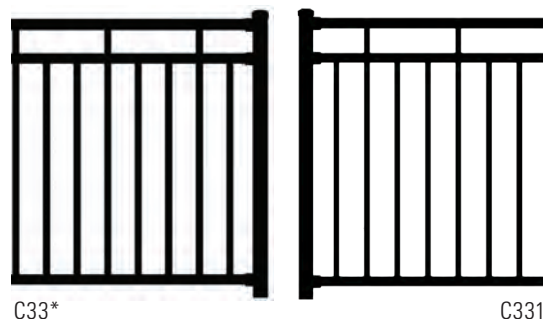
*For 4' through 6' Sections

*For Stair Rail Racking Information visit our website.

Riviera III

Styles C33* & C331

Riviera III Series encompasses the 3-rail design with a unique top design. This design places every third Baluster in the top section while the bottom section contains balusters within the entire section. Style C33 is created with 3/4" square balusters. Style C331 captures a different feel with 3/4" round balusters.



C33*

C331

SPECIFICATIONS

- Railing Heights: 36", 42"
- Railing Lengths: 4', 5', 6', 7', 8'
- Stair Rail Lengths*: 4', 5', 6', 7', 8'
- C33 Baluster: 3/4" x 3/4" x (.045" wall)
- C331 Baluster: 3/4" Round (.050" wall)
- Baluster Spacing: 3.875", 3.625" Stairs
- Stylish Top Rail: 1-3/4" w (.090") x 1-3/8" t (.085")
- Mid Rail: 1-3/4" w (.070") x 1-1/4" t (.070")
- Bottom Rail: 1-3/4" w (.090") x 1-1/4" t (.120")
- Vinyl Insert Baluster Retainer (Top, Mid and Bottom Rails)
- Bottom Rail Support: 5', 6', 7', 8'
- Adjustable Gates: 36"W, 48"W, and 60"W Openings

NOTE: Baluster end spacing may vary by length.
All sections do not come out even on each end as shown above.



A Style: C33
Color: Satin Black

B Style: C33
Color: Satin Black

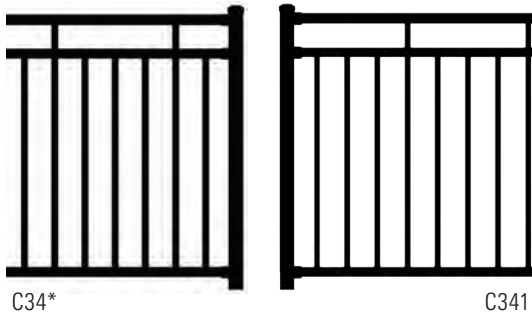


CCRR-0163 complies with IBC, IRC, and FBC



*For 4' through 6' Sections

*For Stair Rail Racking Information visit our website.



Riviera IV

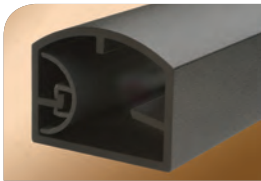
Styles C34* & C341

For a more delicate appearance, the Riviera IV Series takes every fourth Baluster to the top rail with a bottom section full of balusters. Style C34 has 3/4" square balusters while Style C341 is complimented with 3/4" round balusters.

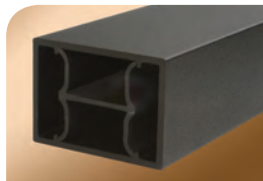
SPECIFICATIONS

- Railing Heights: 36", 42"
- Railing Lengths: 4', 5', 6', 7', 8'
- Stair Rail Lengths*: 4', 5', 6', 7', 8'
- C34 Baluster: 3/4" x 3/4" x (.045" wall)
- C341 Baluster: 3/4" Round (.050" wall)
- Baluster Spacing: 3.875", 3.625" Stairs
- Stylish Top Rail: 1-3/4" w (.090") x 1-3/8" t (.085")
- Mid Rail: 1-3/4" w (.070") x 1-1/4" t (.070")
- Bottom Rail: 1-3/4" w (.090") x 1-1/4" t (.120")
- Vinyl Insert Baluster Retainer (Top, Mid and Bottom Rails)
- Bottom Rail Support: 5', 6', 7', 8'
- Adjustable Gates: 36"W, 48"W, and 60"W Openings

NOTE: Baluster end spacing may vary by length.
All sections do not come out even on each end as shown above.



Top Rail Profile



Mid Rail Profile

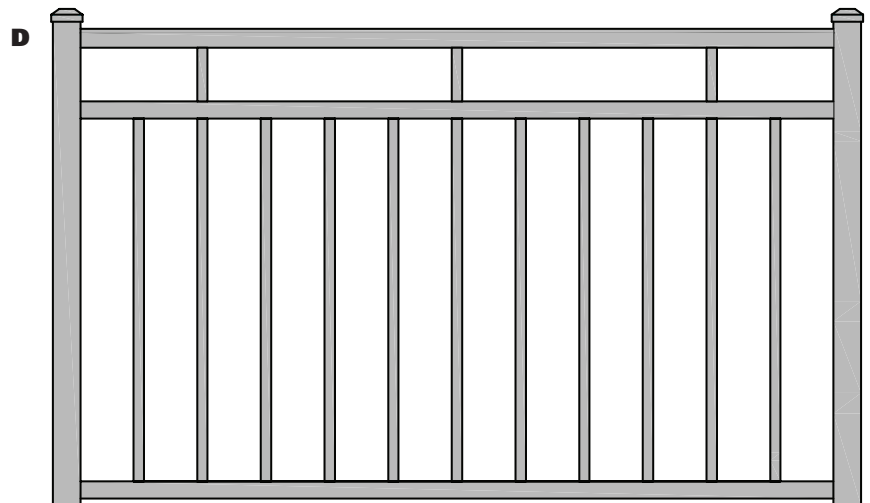


Bottom Rail Profile

CCRR-0163 complies with IBC, IRC, and FBC



*For 4' through 6' Sections



C Style: C34
Color: Satin Black

D Style: C341 Adjustable Gate



A



B

A Style: C70
Color: Black
Fine Texture
with Clear Glass

B Style: C70
Color: Satin Black
with Clear Glass



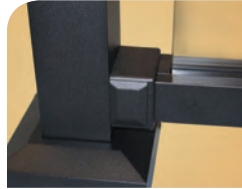
SPECIFICATIONS

- Railing Heights: 36", 42"
- Railing Lengths: 4', 5', 6'
- Stair Rail Lengths: All Stair Rails are Custom Ordered
- Glass Panel: 1/4" Tempered Glass Standard
- Standard Glass Panel Color: Clear
Special Order Colors: Bronze, Grey
- Optional 3/8" Tempered Glass Rails Available
(3/8" Glass NOT Available Through DSI)
- Stylish Top Rail: 1-3/4" w (.085") x 1-3/8" t (.085")
- Bottom Rail: 1-3/4" w (.085") x 1-1/4" t (.085")
- EPDM Gasket: Top and Bottom Rails
- Welded Gates: 36"W, 48"W, and 60"W Openings
(Custom Sizes Available through Tech Services)

NOTE: Glass end spacing may vary if rails are cut down.
All sections do not come out even on each end as shown above.



Top Rail Profile



Bottom Rail Profile

The stylish top rail and classic bottom rail securely hold glass panels in place.

Veranda

Style C70

The Veranda Series creates a phenomenal viewing area. The crystal clear design incorporates full glass panels into the classic 2-rail design. Whether you have a view of land or water, the Veranda Series gives you an open concept with the security of a full railing sections.



D&E Style: C70
Color: White Fine Texture with Clear Glass

CCRR-0163 complies with IBC, IRC, and FBC





A Easily Attaches to Westbury® C Series Crossover Post System

B Supports Wood or Composite Deck Board (Deck Board Not Included)

C Solid Wall Construction for Strength & Durability





Drink Rail

Westbury® Drink Rail adapts to all Westbury® C Series designs. Pre-drilled and ready to install, Drink Rail mounts sturdily and is ready for your wood or composite material to be attached. Convenient and beautiful, Drink Rail creates the perfect spot for your morning coffee or a cool drink in the afternoon.

SPECIFICATIONS

- Pre-Drilled Westbury® Aluminum Drink Rail (individually sleeved)
- #10 x 5/8" Self-Tapping Screws (Attach To Top Rail)
- #10 x 3/4" Screws (To Attach Deck Boards)
- Drink Rail Length: 74" & 98"
- Drink Rail Width: 3 1/4"
- Supports Wood or Composite Deck Board
- Lifetime Limited Warranty
- Installs on Westbury® C Series Crossover Post System
- Available in all Westbury® Standard Colors
- Deck Board Not Included

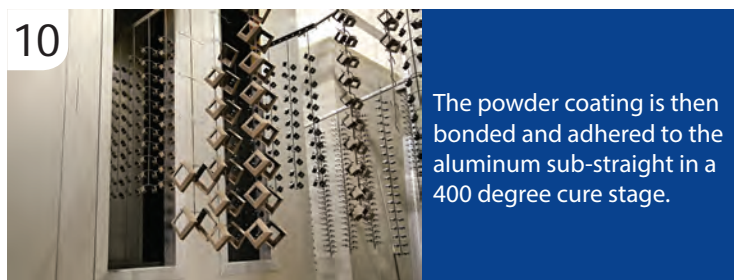


D Underside View of the Seamless Integration of the Drink Rail system

E Pre-Drilled to Attach the Top Rail

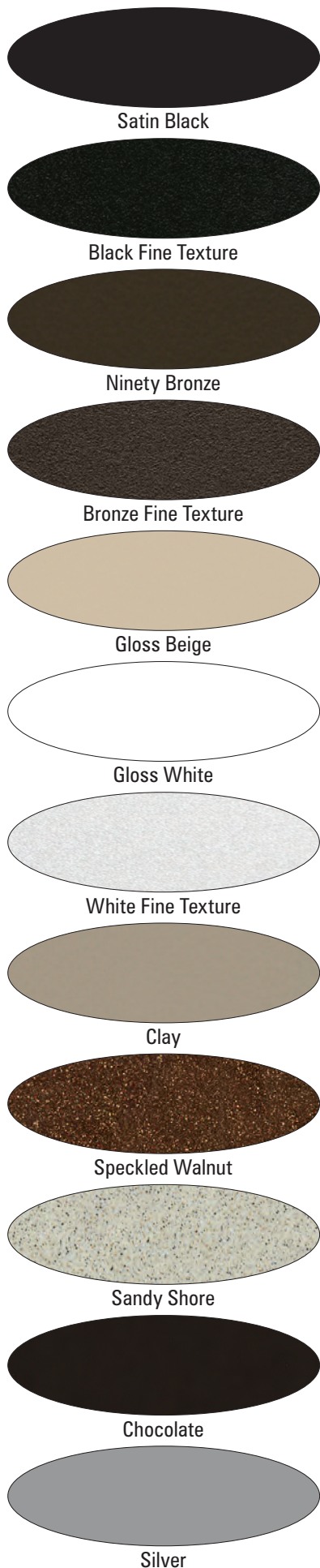
F Easily Attaches to Westbury® C Series Crossover Post System

POWDER COATING



The powder coating application booth produces zero VOC emissions. Powder is stored and applied in a climate controlled positive pressure environmental room. Ten pre-treat system titration checks twice per shift maintain system parameters and ten QC checks are completed every hour on product coming off the powder-coating line. Parts are not touched by human hands during the pre-treat, dry-off, application and cure process to maintain ultimate cleanliness of powder-coated parts.

DSI is a PCI 4000 certified and verified AAMA 2604 and AAMA 2605 compliant powder coating applicator. The powder coating process is accredited by the American Architectural Manufacturing Association and the Powder Coating Institute. Our powder coating is custom blended from a Super Durable Polyester TGIC (Triglycidyl Isocyanurate) resin-base, using premium pigmentation to meet AAMA 2604 specifications. Our AAMA 2605 is a fluorocarbon polymer resin system.



Colors shown are a close representation of the true color.
Please consult actual samples for accurate powder coating colors.

Colors

Standard Colors & Custom Colors

Westbury® Aluminum Railing is offered in a variety of colors and textures to compliment your home. Our 12 standard colors include satin, textured and multi-color finishes. Westbury® Aluminum Railing is also available in custom colors to meet your design vision, the possibilities are endless.

Powder Coating



Verified AAMA 2604 Compliant Powder Coating

AAMA 2604 & AAMA 2605

DSI uses AAMA 2604 rated powder coating on all Westbury® Aluminum Railing. Our PCI-4000 Certified Powder Coating process offers an uncompromising quality created by state-of-the-art technology. AAMA 2605 Powder Coating is also available as an option for your Westbury® Aluminum Railing.



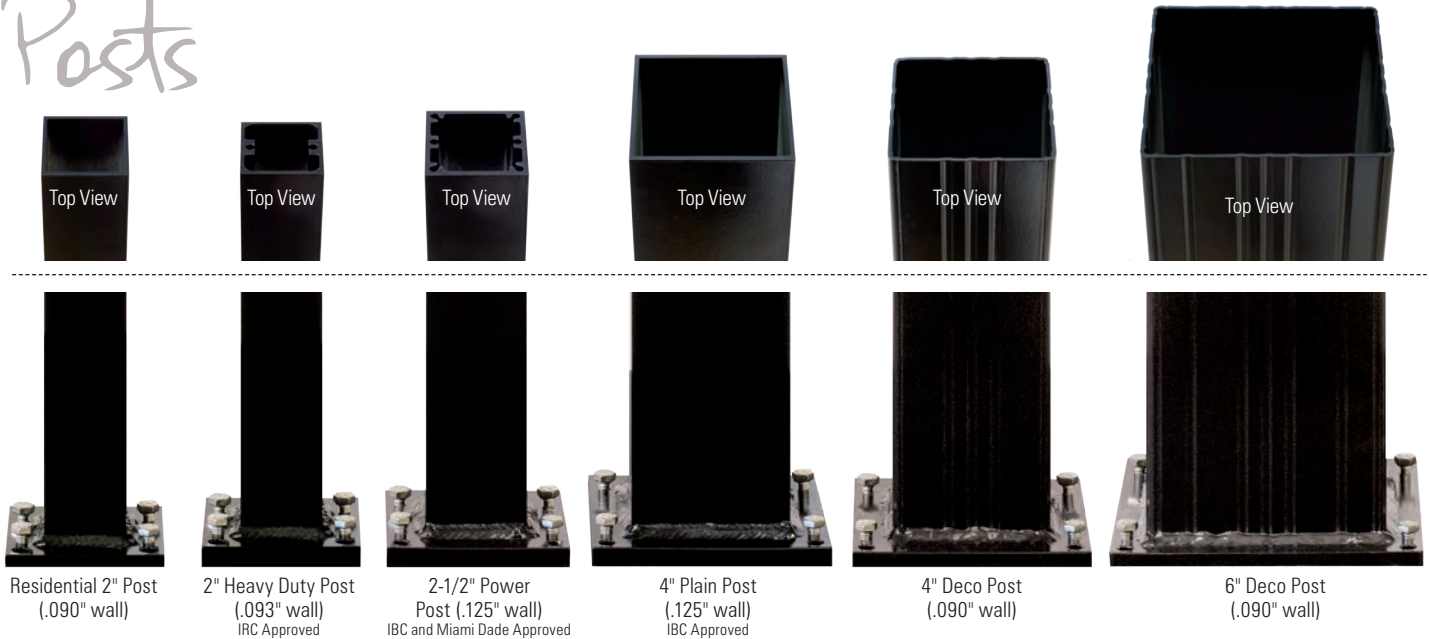
A Style: C10
Color: Black Fine Texture
With Level Crossover Post

Accessories

Brackets, Posts, Caps, & Flairs

Westbury® Accessories add the finishing touch to your masterpiece. A variety of post sizes and wall thicknesses add strength to your railing. The combination of mounts and crossover options provides you with the ability to adapt Westbury® railing to your needs. Optional post caps finished off by the convenience of a 2-piece post flair creates a variety of looks.

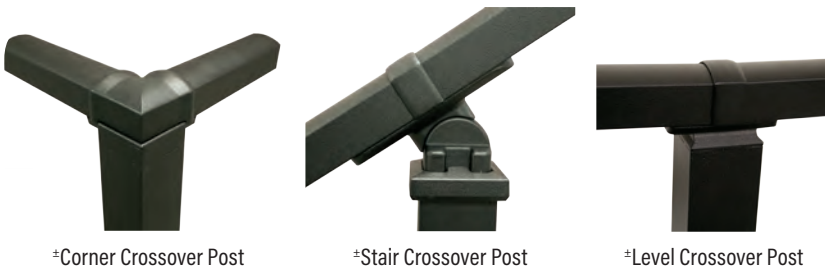
Posts



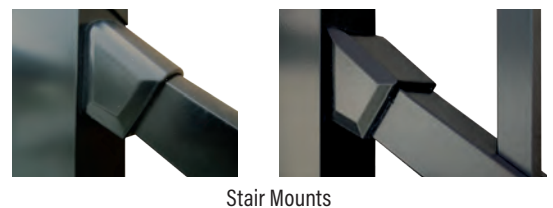
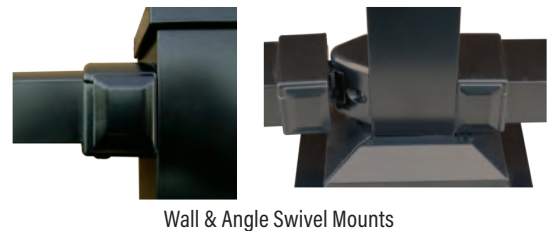
Testing Results - CCRR-0163 complies with IBC, IRC, and FBC. Note: Please check with local code authorities for requirements.



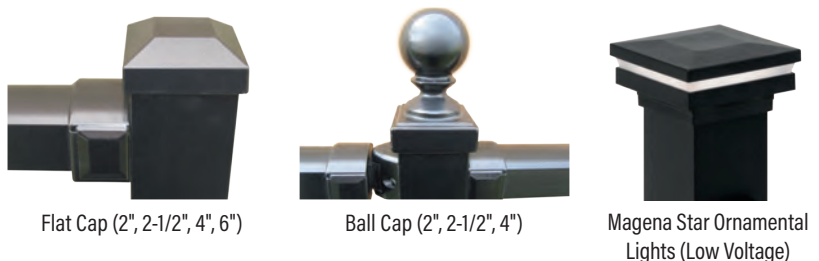
Crossovers



Mounts



Accessories



Patent No. 8,998,175±

CHR

Continuous Handrail ALUMINUM

ADA Compliant Handrail

A variety of rail lengths and accessories complete this system. Available in 8', 10', & 16' Rail Lengths

Available in all the colors shown on page 21.



Collar Ring
(to cover splice)



Inside Corner Mount
(attaches to post)



Wall Mount



See Assembly
1-2-3 Below



1-3/8" Handrail



Internal Connector



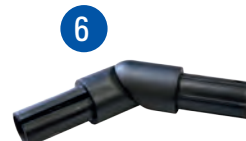
Collar Rings
(to cover splice)



180° Elbow



Wall Return



Adjustable Elbow



Elbow
(5°, 31°, 34°, and 36°)



90° Elbow



Inside Corner Mount
(attaches to post)



Internal End Cap



Wall Mount



Extended
Wall Mount



Wall-End Mount



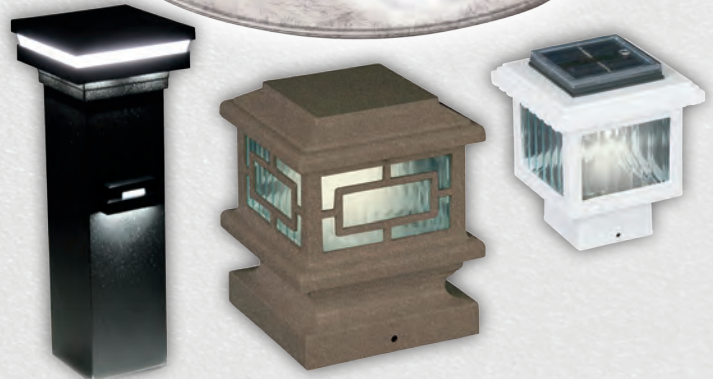
90° Welded Elbow



ScreenRail



— DSI FAMILY OF PRODUCTS —



westburyrailing.com

We have tried to make this catalog comprehensive and factual. We reserve the right to discontinue at any time, without notice, colors, materials, equipment and availability. Since some information may have been updated since the time of printing, we are not responsible for typographical or pictorial errors. Materials shown may vary slightly from actual colors. ©Digger Specialties 2017 SP 04/17 99776